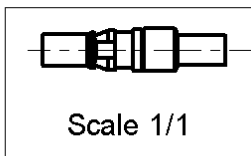
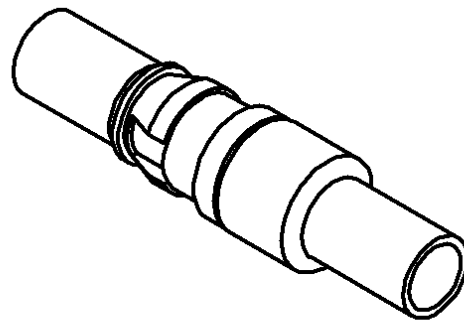
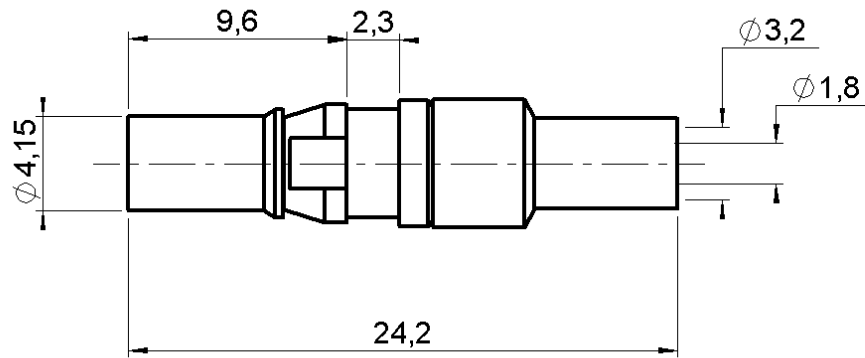


**CLIP-ON STRAIGHT JACK CRIMP TYPE**

**R120.238.510**

**CABLE 2.6/50 S**

Series : **DIN 41626**



All dimensions are in mm.



| COMPONENTS     | MATERIALS        | PLATINGS (µm) |
|----------------|------------------|---------------|
| BODY           | BRASS            | GOLD .        |
| CENTER CONTACT | BERYLLIUM COPPER | GOLD .        |
| OUTER CONTACT  | -                | -             |
| INSULATOR      | PTFE             | -             |
| GASKET         | -                | -             |
| OTHERS PARTS   | -                | -             |
| -              | -                | -             |
| -              | -                | -             |

Issue : 0042 B

In the effort to improve our products, we reserve the right to make changes judged to be necessary.



**CLIP-ON STRAIGHT JACK CRIMP TYPE**

**R120.238.510**

**CABLE 2.6/50 S**

Series : **DIN 41626**

**PACKAGING**

| Standard   | Unit              | Other             |
|------------|-------------------|-------------------|
| <b>100</b> | <b>'W' option</b> | <b>Contact us</b> |

**SPECIFICATION**

**ELECTRICAL CHARACTERISTICS**

|                                 |               |                             |
|---------------------------------|---------------|-----------------------------|
| Impedance                       |               | <b>50</b> Ω                 |
| Frequency                       |               | <b>0-2</b> GHz              |
| VSWR                            | <b>1.35 +</b> | <b>0.000</b> x F(GHz) Maxi  |
| Insertion loss                  |               | <b>NA</b> √F(GHz) dB Maxi   |
| RF leakage                      | - (           | <b>NA</b> - F(GHz)) dB mini |
| Voltage rating                  |               | <b>250</b> Veff Maxi        |
| Dielectric withstanding voltage |               | <b>750</b> Veff mini        |
| Insulation resistance           |               | <b>5000</b> MΩ mini         |

**CABLE ASSEMBLY**

| Stripping | a    | b    | c    | d    | e    | f    |
|-----------|------|------|------|------|------|------|
| mm        | 0.00 | 7.00 | 11.0 | 0.00 | 9.00 | 0.00 |

Assembly instruction :

Recommended cable(s)  
 KX 22A  
 RG 316  
 RG 188

Cable retention

- pull off **40** N mini
- torque **NA** N.cm

**MECHANICAL CHARACTERISTICS**

|                            |  |                     |
|----------------------------|--|---------------------|
| Center contact retention   |  |                     |
| Axial force – Mating end   |  | <b>10</b> N mini    |
| Axial force – Opposite end |  | <b>10</b> N mini    |
| Torque                     |  | <b>NA</b> N.cm mini |

**TOOLING**

| Part Number  | Description   | Hexagon |
|--------------|---------------|---------|
| .            | .             | .       |
| R282.211.000 | CRIMPING TOOL | 3.25    |
| R282.235.003 | CRIMPING DIES | 3.25    |
| R282.293.000 | CRIMPING TOOL | -       |

|                    |  |                 |
|--------------------|--|-----------------|
| Recommended torque |  |                 |
| Mating             |  | <b>NA</b> N.cm  |
| Panel nut          |  | <b>NA</b> N.cm  |
| Clamp nut          |  | <b>NA</b> N.cm  |
| A/F clamp nut      |  | <b>0.000</b> mm |

**OTHERS CHARACTERISTICS**

|             |  |                        |
|-------------|--|------------------------|
| Mating life |  | <b>500</b> Cycles mini |
| Weight      |  | <b>1.930</b> g         |

**ENVIRONMENTAL**

|                       |  |                     |
|-----------------------|--|---------------------|
| Operating temperature |  | <b>-55/+155</b> °C  |
| Hermetic seal         |  | <b>NA</b> Atm.cm3/s |
| Panel leakage         |  | <b>NA</b>           |

Issue : **0042 B**

In the effort to improve our products, we reserve the right to make changes judged to be necessary.



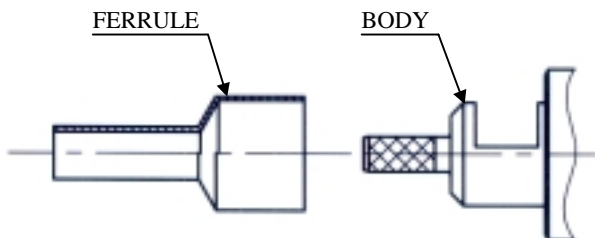
**CLIP-ON STRAIGHT JACK CRIMP TYPE**

**R120.238.510**

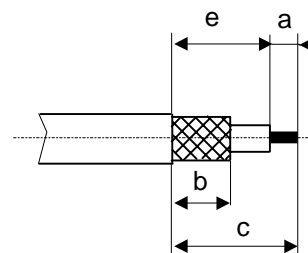
**CABLE 2.6/50 S**

Series : **DIN 41626**

**COMPONENTS**



**STRIPPING DIMENSIONS**

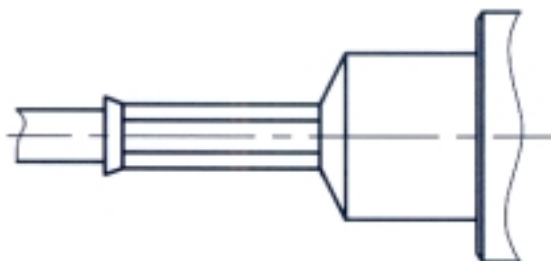


**1**



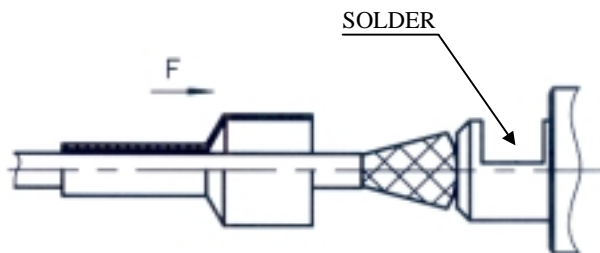
Slide the ferrule onto the cable.  
Strip the cable.

**3**



Crimp the ferrule with crimping tool (see connector TDS ).  
Cut the excess of braid if necessary.

**2**



Fan the braid.  
Push the connector body under the braid.  
Slide the center contact on until it bottoms against the cable dielectric.  
Solder the center contact.  
Push the connector body under the braid.  
Slide the ferrule over the braid in direction F.

**Issue : 0042 B**

In the effort to improve our products, we reserve the right to make changes judged to be necessary.

